

# ONETOP

## ES2012 SERIES

ANSI / DIN Standard  
Electric Strike



200J Dynamic  
Impact Resistance



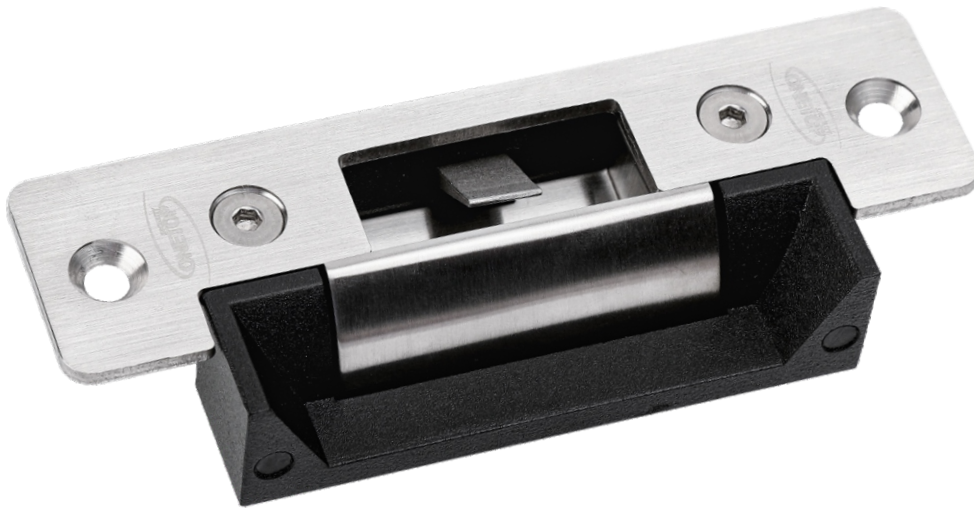
750Kg Holding Force



Over 1 Million Cycles  
Usage Lifespan



Power to Lock  
Power to Open  
Interchangeable



Anti-Corrosion Plating  
Passed 96Hrs Salt Spray Test



Ingress Protection  
Certification (Option)

### FEATURE

The ES2012 series are high quality electric strikes operated on 12 VDC, they are suitable for use with surface mount mechanical door locks and easy to install. The device can be configured easily on site to fail safe or fail secure and have no loose pins. The changeover is achieved without removal of the strike body through a patented screw cap part. ES2012 series model are IP56 weather resistant. Extension lips of different length are available on order as options.

### SPECS



IP56



#### Fail Safe/Secure

Dimension

Weight

Operating Voltage

Operating Current

Holding Force

Impact Energy

Operating Conditions

Output Signals

Surface Finishes

#### Interchangeable

Lock Body

Face Plate

0.5Kg

12/24VDC  $\pm 10\%$

12VDC – 200mA

750Kg

200J

Temperature

Humidity

#### Power to Open

#### Power to Lock

L 84.5 x W 43.4 x D 35mm

L 123.7 x W 31.7 x D 3mm(ES2012)

L 190 x W 31.7 x D 3mm(ES2012-L190)

L 209 x W 31.7 x D 3mm(ES2012-L209)

-10°C ~ 60°C

0 ~ 85% (non-condensing)

Door Status Sensor

(DSS) Option

COM/NO/NC:

Max. 125VAC, 3A;

Max. 30VDC, 2A

High Quality Finish for Anti-corrosion

(96 Hrs Salt Spray Corrosion Tested)

### MODELS

#### Door Status Sensor Monitoring

ES2012

ES2012M

ES2012-L190

ES2012M-L190

ES2012-L209

ES2012M-L209

•

•

•

### ACCESSORIES

ES2012-EL15

ES2012-EL25

ES2012-EL50

ES2012-EL75

15mm Extension Lip for ES2012 series

25mm Extension Lip for ES2012 series

50mm Extension Lip for ES2012 series

75mm Extension Lip for ES2012 series