

infinity siren

Wireless External Siren for ESL & EC-i

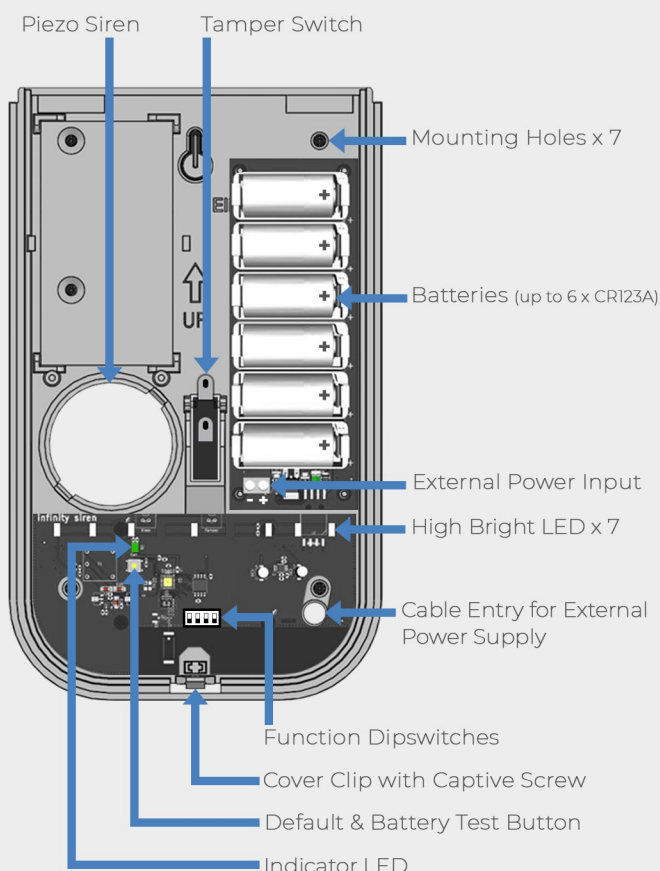
infinity series
powered by EliteControl



Specifications

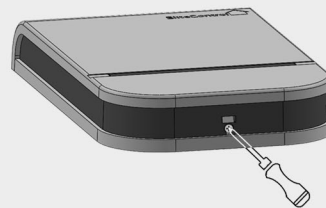
Power Supply	Includes 3 x CR123A batteries
Sound Pressure Level	110dB
Wireless Range	Up to 500m Line of Sight
Frequency	916MHz
Illumination	7 x White High Bright LED
Indication	LED & Piezo Siren
Tamper Switch	Normally Closed
IP Rating	IP55
Battery Type	3V CR123A (supports up to 6)
Battery Life	Up to 5 Years
Operating Temperature	-10°C to 50°C
Environment Humidity	85% max
Dimensions	H250 x W150 x D39mm
Weight Incl Batteries	360g
External Power Input	5 - 15VDC, 500mA
Event Transmission	Tamper, Low Battery & Supervision

Hardware Overview



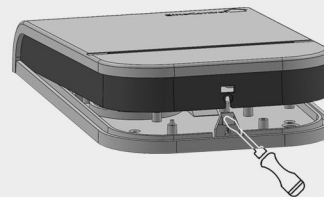
Product Mounting

Front Cover Removal



1. Captive Screw

Use a phillips screw driver to loosen the captive screw as shown.



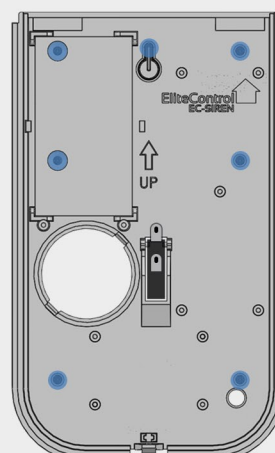
2. Remove Cover

Use a flat head screw driver to gently move the white clip in and separate the cover from the base.



3. Pre Mounting

After choosing a suitable mounting location, ensure a positive 'click' from the tamper switch is heard when replacing the cover. If no 'click' is heard, adjust tamper lever or relocate the product to suit.



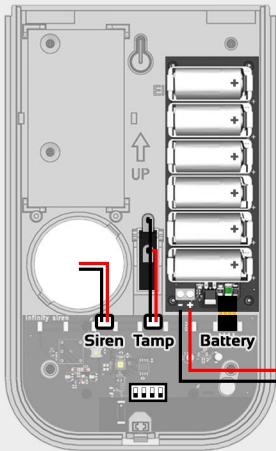
4. Mounting Holes

Mount vertically using at least 4 of the 7 holes detailed in this diagram ●

Note:

Fixings to mount product to the wall are not included.

Connections & External Power



Connections

Make sure siren, tamper & battery connectors are plugged in as shown before learning the device.

External Power (optional)

5 to 15VDC, 500mA input for optional hard wired power source.

Dipswitch Settings

Wireless Remote Chirps to Siren

Note: Chirps also require programming as found in the 'Area' section of the dashboard or keypad programming manual.

1 ON = Chirps enabled & 1 OFF = Chirps disabled



Power Save

Battery life of this product largely depends on how often the device communicates with the control panel. This is configured using dipswitches 2, 3 & 4 as detailed below:

2 ON = Siren communicates every 2 seconds



3 ON = Siren communicates every 4 seconds



4 ON = Siren communicates every 8 seconds



(Dipswitch 4 on has the lowest battery consumption)

Learning Procedure (make sure you are in installer programming before proceeding. Default P000000E).

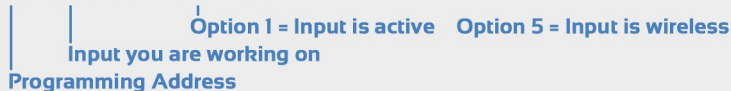
- The infinity siren is learnt as an input to enable tamper, battery low & supervision reporting.
- The infinity siren follows OUTPUT 1 on the ESL & ESX control panel. This is fixed & can not be changed.

Enable Wireless Input (P122E).

Press PROG 122 ENTER then the input number you wish to make wireless, followed by ENTER. Next make sure options 1 & 5 are on. This makes the input active & wireless, then press ENTER to save.

Example:

P 122 E 9 E turn 1 & 5 on E



Learn Device into an Input (P164E) (ensure battery is correctly installed in the device before proceeding).

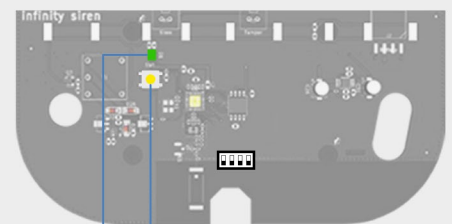
- Press PROG 164 ENTER then the input number you wish to enrol the device into, followed by ENTER.
- Press ENTER again to start the learn beeps, indicating that the system is waiting to learn a device.
- Activate the siren tamper switch to complete the learn process and the keypad should stop beeping.

The keypad will now display the input number you learnt the device into. Repeat the steps above using a different input to learn another device or exit programming to test.

Default Programming

If the 'infinity siren' has previously been learnt into a system it may require defaulting as detailed below:

1. Remove all of the batteries.
2. Press and hold the reset button for 5 seconds.
3. Whilst the reset button is still held down, insert a battery.
4. Keep holding the button down (the LED will turn Red).
5. When the LED turns Green, release the button to complete the default.



Indicator LED Default/Battery Level Button

Battery Test

With the battery inserted, press the gold button once then release and the LED will indicate battery status. Green = Battery OK Red = Battery Low. In this case, replacing the batteries is advised

Note: If system defaults have changed you may need to reference the full control panel manual for more information.