



HeatPro Series Thermal Cameras

Hikvision is dedicated to creating professional protection solutions for everyone. Our thermal cameras sense an object's heat radiation, capturing images 24/7, regardless of environmental factors such as darkness, lowlight, strong backlight, etc.

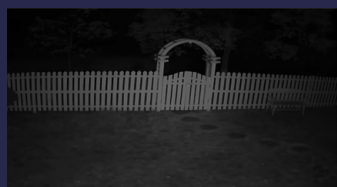


HIKVISION®

Technical Advantages

Designed for any light

Low Light Condition

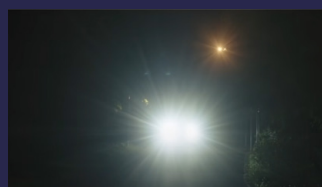


Optical View

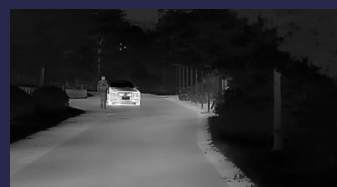


Thermal View

Back Light Condition



Optical View



Thermal View

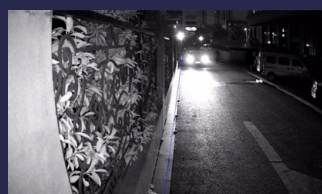
See the unseen



Conventional
Optical Camera



Hikvision Heatpro
Series Thermal Camera



Conventional
Optical Camera



Hikvision Heatpro
Series Thermal Camera

Focus on targets

Application Scenarios



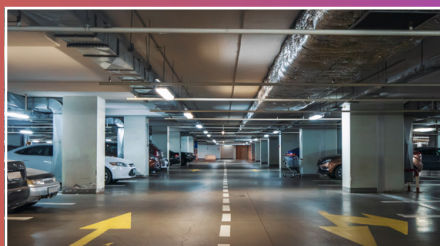
Residential areas



Retail stores



Office buildings



Parking lots



Warehouse

Hikvision Oceania

www.hikvision.com/au-en/

Hotline +61 1300 976 305

salesau@hikvision.com

Follow us on social media to get the latest product and solution information



Hikvision Australia and New Zealand