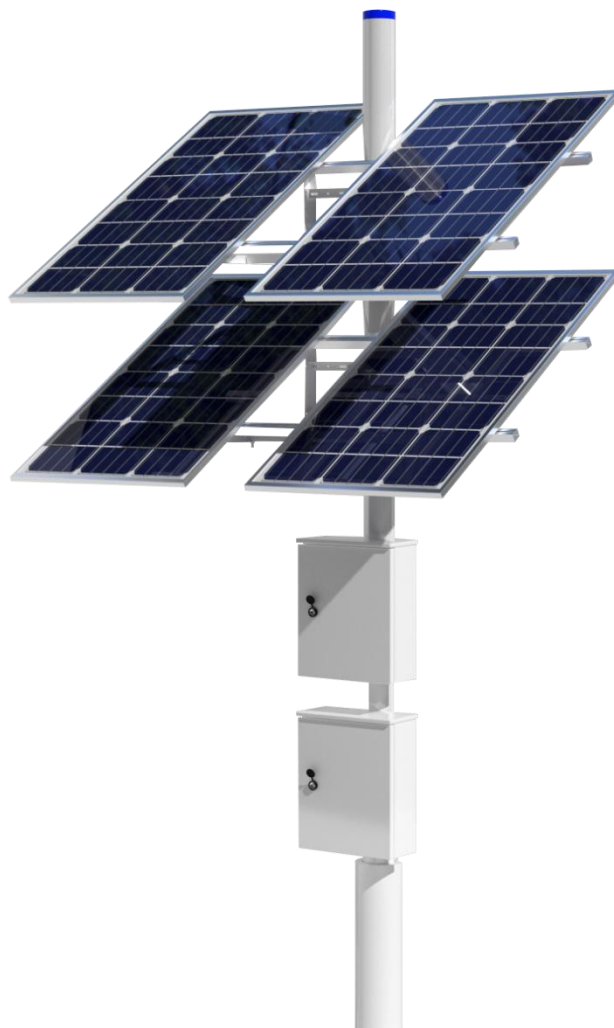


Monitoring Solar Power Supply System

Model: ICL-800W300AH12.8VSOLARSET

Product Introduction

Without wiring, it can be used continuously for 360 days in a place with light. Fully enclosed IP65 is super waterproof, breaking the rules and adopting large capacity; Lithium battery, with long battery life, is far ahead in the industry. At the same time, it is equipped with high conversion photovoltaic panels and excellent power generation performance in low light environment, fast charging and high photoelectric conversion rate. It can be charged normally and operated normally in rainy days.



Features:

- ©IP65 waterproof solar panel 200W solar panel *4pcs, which is encapsulated by high-efficiency mono-crystalline silicon solar cells, has a conversion efficiency of not less than 20% and a module conversion efficiency of not less than 17%. Power: the peak power tolerance of the module is 3%, and high-quality tempered glass with high light transmittance is used; Excellent power generation performance in low light environment, and ideal charging effect can be achieved in rainy days.
- ©High-strength aluminum oxide frame, wear-resistant, one-time die-casting, durable; Unique technology makes the assembly beautiful and easy to install; Unique technology to avoid freezing and deformation of water in the frame; It can bear 5400Pa snow load and 2400Pa wind pressure.
- © High-light-transmission tempered glass is used to effectively resist heavy rain and hail.

Specification:

Model	ICL-800W300AH12.8VSOLARSET
<i>Solar Panel</i>	
Material	High-efficiency mono-crystalline silicon cell, high-strength aluminum alloy frame
Panel materials	Super white toughened glass
Life	25years
Maximum power (Pm)	4 * 200W
Photoelectric Conversion Efficiency (%)	≥21%
Rated Voltage of Solar Panel (V)	18V
Maximum Operating Voltage of Solar Panel (V)	21.5V (MAX)
Open-Circuit Voltage of Solar Panel (V)	22.0V
Maximum Operating Current of Solar Panel (A)	44.44A
Short-circuit current of the solar panel (A)	12.44A
Each Module dimensions (L×W×H)	670mm × 1380mm × 30mm
Each Module weight (KG)	6.5 Kg
Frame material and dimensions (mm)	Anodized aluminum alloy 1.2mm
Module packaging	Tempered glass/EVA/cell/EVA backsheet
<i>Power Supply System</i>	
Power output	12.8V
DC connector	3.1MM×10MM
Battery capacity	2 * 150AH LiFePo4 Battery ~ total = 300AH
Battery Size	2 * 240mm * 175mm * 160mm
Battery life	> 3 years
Charging time	5(H)
Controller	Fully intelligent digital controller, with the functions of preventing overcharge, over discharge, lightning protection, short circuit and reverse connection
Controller life	> 10 Years

Waterproof coefficient	IP65
Outer packing size	Solar Panel Size: 4 * 1380mm * 670mm * 30mm Battery Size: 2 * 240mm * 185mm * 225mm ± 2MM Cabinet Size: 2 * 500mm * 400mm * 200mm
Battery operating temperature range	-40°C-80°C
Net Weight	165KG

Scope of application:

Widely used in: street urban management law enforcement monitoring, river forbidden area monitoring, pipeline valve room monitoring in oil and gas industry, disaster prevention Internet of Things monitoring, national border defense monitoring, forest fire prevention and waterproof monitoring. Farm/orchard management, anti-theft of fishponds, safety monitoring of construction sites, factory areas, expressway sections, outdoor parking lots, tourist attractions, poverty alleviation through new farming and other industries.



Precautions for use:

Solar panels should be installed in the surrounding areas where there are no high-rise buildings, trees, poles, etc., to fully obtain the energy of sunlight. When installing, pay attention to the positive and negative poles to avoid reverse connection of the positive and negative poles and short circuit of the positive and negative poles for a long time.