

# Solar Power Solution

Farmlands | Orchards | Forests | Parks and More  
Non-Stop Power Where the Sun Shines

## Challenges



Complex Wiring



Hard to Maintain



Poor System Stability



Difficult Device Installation and Removal



Short System Standby Time

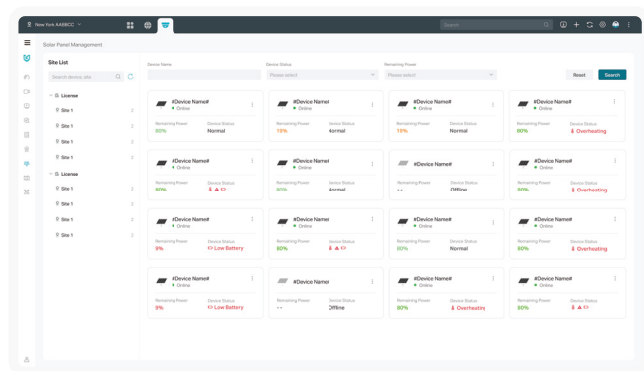


Difficult Event Tracing

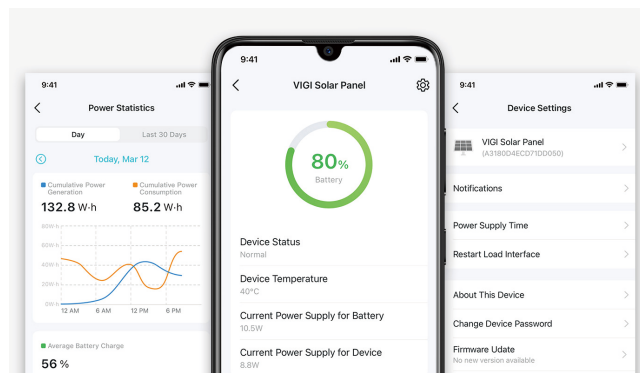
## What We Offer

### Remote Management and Maintenance

Control devices centrally, monitor power statistics, receive low-battery alerts, update firmware, and reboot the system via the VIGI app or VIGI Cloud VMS. Enjoy peace of mind, no matter your location.



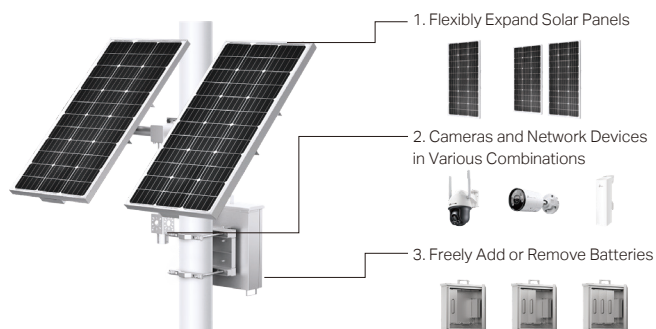
VIGI Cloud VMS



VIGI App

## Customized Assembling

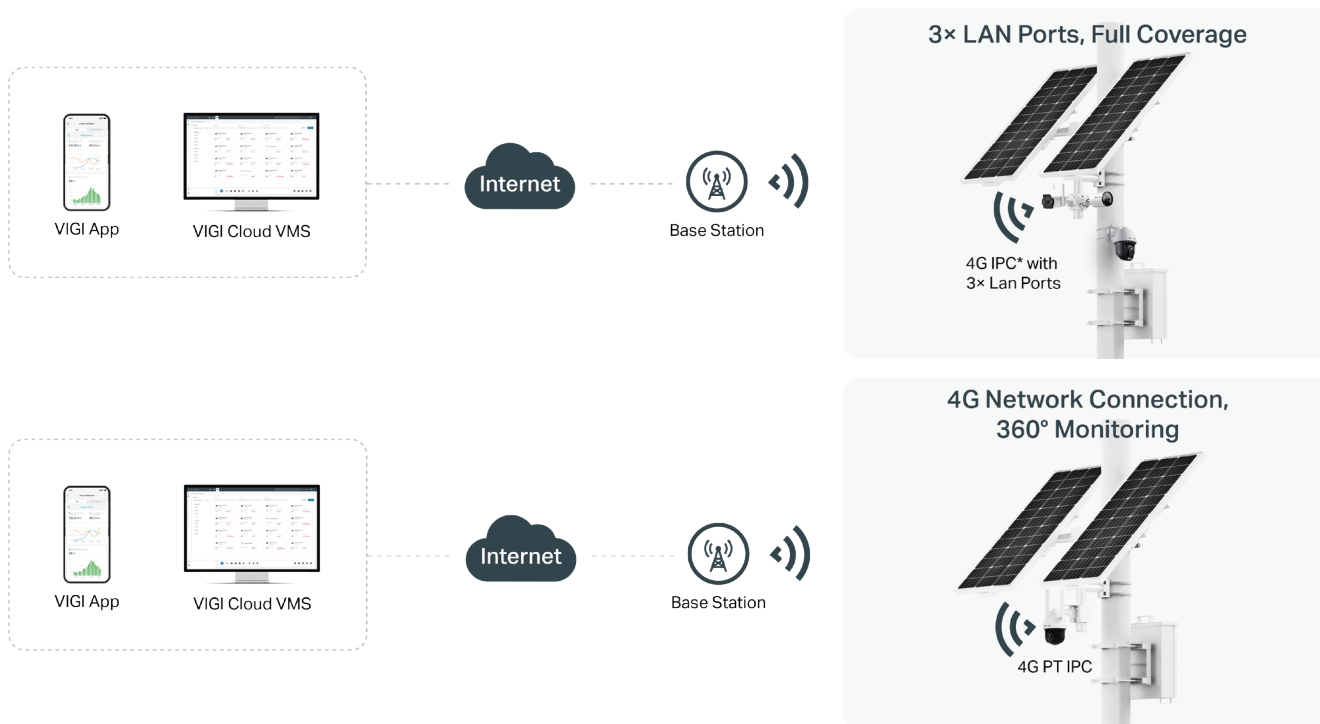
Easily tailor your solar power system with our modular hardware design. Mix and match solar panels, batteries, and onboard devices (3× DC voltage output ports available) to meet your deployment needs freely.



Click the link to view more solutions: <https://www.vigi.com/solution-list/>

# Flexible Deployment

## 1. 4G IPC-Solar Power Solution



## 2. 4G Router-IPC-Solar Power Solution

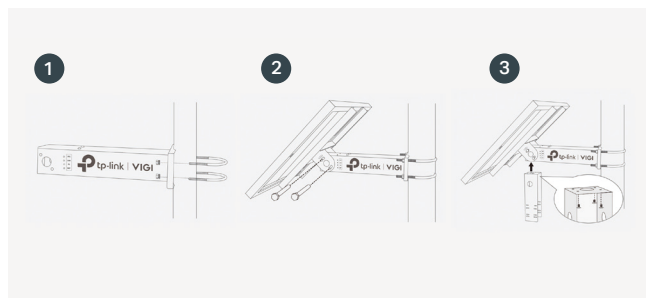


## 3. Wireless Bridge-IPC-Solar Power Solution



# Simple Installation

The modular design allows for quick bracket installation and disassembly within minutes.



# Adjustable Angle

Adjustable angles of 5°, 15°, 25°, 35°, 45°, and 55° ensure optimal alignment and maximum sunlight utilization.



\*The model of the 4G IPC is InSight S345-4G and will be shipped in Q4 2024.

\*The model of the 4G router is ER703WP-4G-Outdoor and will be shipped in Q4 2024.

## Longer Standby Time

### Industrial-Grade Solar Panel



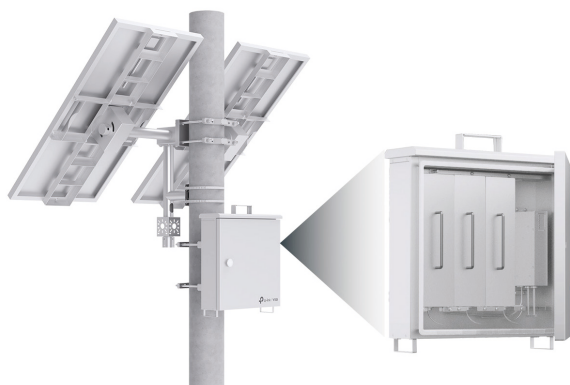
Grade **A** Solar Panel

**21.6%\*** ↑ Conversion Efficiency

**25+** Year Lifespan

Up to **180W<sup>†</sup>** Optional

### Automotive-Grade Lithium Battery



Up to **93.6Ah** Optional

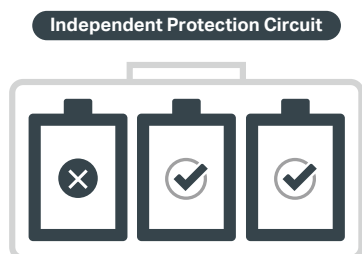
Discharge Efficiency up to **99%**

**> 500** Cycles

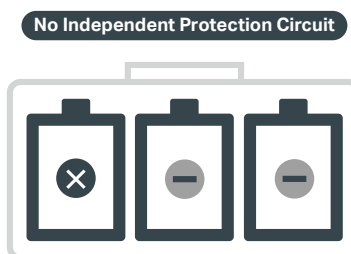
Remaining Capacity **> 70%** after 500 Cycles

### Independent Protection Circuit\*\*

Ensures battery safety and uninterrupted device operation.



If a single battery fails,  
other batteries still work normally



If a single battery fails,  
other batteries are at risk of damage

### MPPT Controller Boosts Charging Efficiency

An MPPT (Maximum Power Point Tracking) controller optimizes solar panel power, reduces power loss, and increases charging efficiency by 20% compared to PWM (Pulse Width Modulation) controllers.



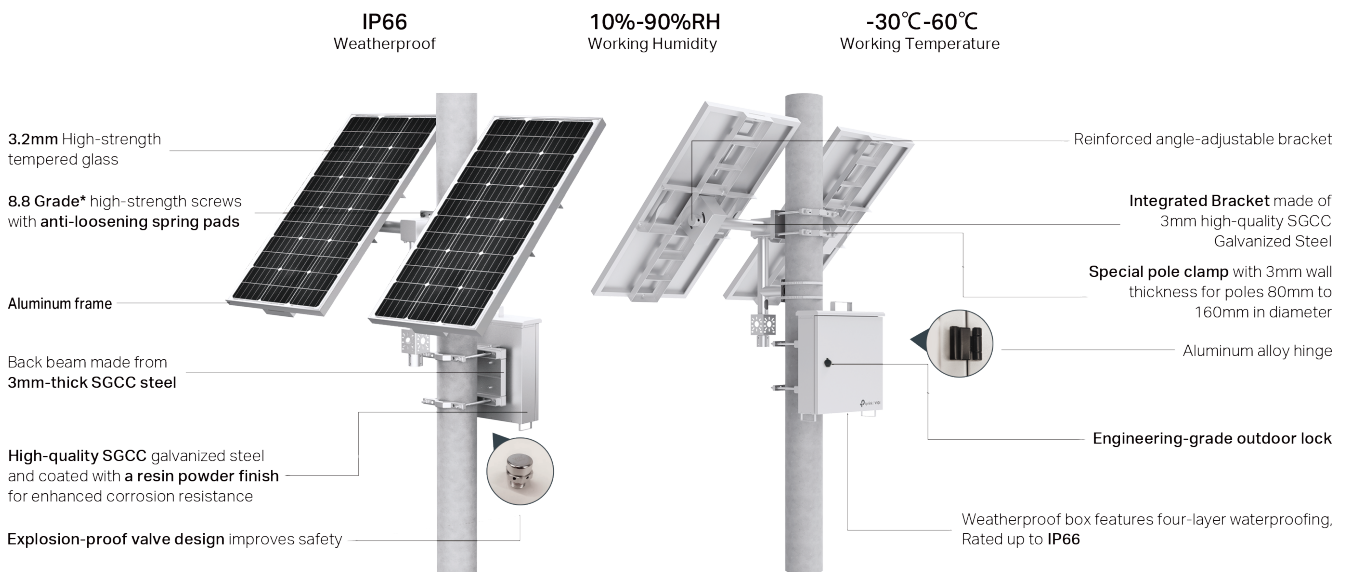
\*This value is compared to the conversion efficiency of polycrystalline silicon solar modules.

\*\*Applicable to VIGI PS90. And VIGI PS90 will be available in Q3 2024.

<sup>†</sup>Requires 2\*VIGI Solar Panel 90W.

# High System Stability Reduces Subsequent Maintenance Costs

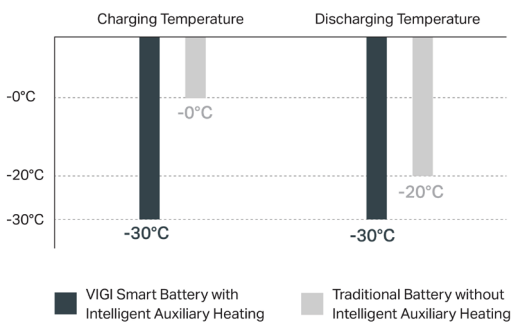
## Enterprise Level Hardware Design



## Intelligent Auxiliary Heating Technology

The built-in smart battery supports intelligent auxiliary heating technology, which allows the battery to operate normally across a wide temperature range.

### Charge and Discharge Temperature Limit Comparison



### Actual Discharge Comparison at the Same Temperature



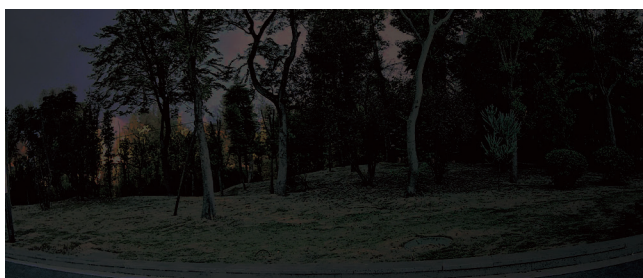
\*The auxiliary heat will only be turned on when the photovoltaic system has a certain input or the battery has a certain amount of power. The test environment consisted of a 20°C aging box and 1A constant current discharge.

## Rapid Incident Handling

In remote areas like orchards and farms, dim lighting at night complicates intruder detection. Delays in reaching the scene may mean incidents are already happening, compounded by complex terrain hindering intruder tracking.

### VIGI AI ISP-Powered ColorPro Image\*\*

Captures colorful and clear images even in ultra low-light conditions without fill lights, enhancing situational awareness.



Naked Eyes



VIGI AI ISP-Powered ColorPro Image

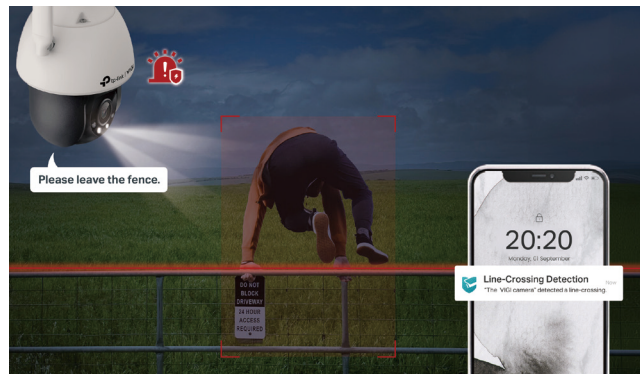
\*Complies with international standard ISO 898-1.

\*\*This feature will be available in Q4 2024.



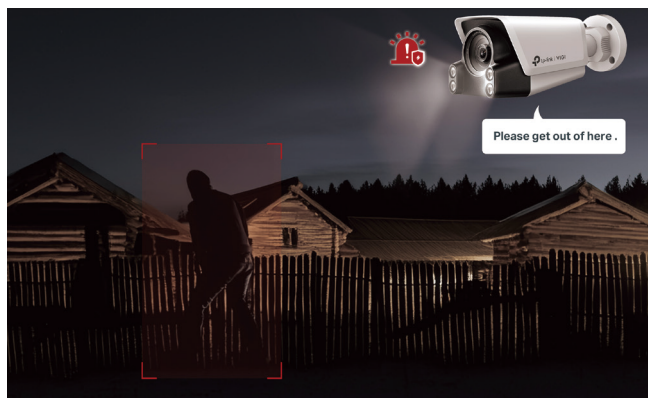
## Smart Detection

VIGI's smart detection, like intrusion and line crossing, will notify you promptly of any breach, enabling swift action on your part.



## Active Defense

Instantly deter potential intruders with sound and light, proactively protecting your property even when you're away.



## Auto Tracking

Continuously tracks intruders and provides seamless footage. This enables swift comprehension of intruders' paths.



## Typical Applications



Farmlands



Orchards



Forests



Parks

## Other Value Added Highlights

### Trusted Quality



Independent R&D



Superior Suppliers



Vertical Integration



Complete Quality Control

### Superb Pre- and After-Sales Services



Certification and Training (TPSA)



Replacement and Warranty



Localization Support Teams



Dedicated Online Support



Official Community

## SolutionX | Partner Program

<https://partner.tp-link.com/>

Join TP-Link SolutionX Partner Program to get better support and more profit.

# Recommended Products

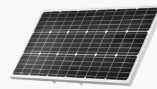
## Solar Power Supply System\*



### VIGI PS90<sup>§</sup>

VIGI Solar System Controller

- 1×2×/3× 31.2Ah Customized Ternary Lithium
- Independent Protection Circuit
- MPPT Controller
- IP66 Weatherproof



### VIGI Solar Panel 90W

VIGI Solar Panel 90W

- 90W Capability
- Grade A Monocrystalline Silicon
- IP67 Weatherproof

## Network Cameras

H.265+

ONVIF®

STG



### InSight S345-4G<sup>§</sup>

VIGI 4MP Outdoor Full-Color 4G Bullet Network Camera

- 3× LAN Ports to Power Downstream Devices
- 4G Mobile Network\*\*
- 4MP Resolution & Full-Color
- Smart Detection
- Active Defense and Two-Way Audio
- IP66 Weatherproof and On-board Storage\*\*



### VIGI C540-4G

VIGI 4MP Outdoor Full-Color 4G Pan Tilt Network Camera

- 4MP Resolution & Full-Color
- 4G Mobile Network\*\*
- 360° Monitoring & Auto Tracking
- Human & Vehicle Classification
- Smart Detection
- Active Defense and Two-Way Audio
- IP66 Weatherproof and On-board Storage\*\*

## Software Services



### VIGI App

- Remote Management and Maintenance without On-site Presence
- Practical Playback
- Two-Way Audio
- Instant Notifications



### VIGI Cloud VMS

VIGI Cloud Video Management System

- Cloud-Based, Free<sup>§</sup> and Unlimited
- Unified Management Across Sites
- Zero-touch Maintenance
- Easy to Deploy

## Solar System Selector<sup>†</sup>

By specifying parameters such as load device power and desired system operating time, select the suitable solar products quickly.

Calculate Total Power Consumption of Load Devices

Type: VIGI Camera

Model: VIGI C45

Average Power Consumption: 100 W<sup>†</sup>

Type: Other

Average Power Consumption: 100 W<sup>†</sup>

ADD

Select Installation Region

City: New York

Daily Solar Radiation: 100 kWh

Enter Your Needs

Working Hours: 100 h/day

Required Working Hours on Consecutive Rainy Days: 100 days<sup>‡</sup>

Required on-load Charge on Sunny Days: 100 days<sup>‡</sup>

Calculate

Calculation Result

Estimated Working Hours on Consecutive Rainy Days: 100 days<sup>‡</sup>

Estimated on-load Charge on Sunny Days: 100 days<sup>‡</sup>

Recommended Solar Power Supply System Model

Option	Model	Quantity
Option 1	VIGI PS90	1
Option 2	VIGI Solar Panel 90W	1

Reinstallable | Confirm and Purchase Now

Click the link to learn more about VIGI products: <https://www.vigi.com/all-vigi-surveillance/>

Click the link to view related cases: <https://www.vigi.com/case-study/>

\*Different combinations of lithium batteries, solar panels, and solar brackets can create diverse solar power supply systems. For more information, visit the VIGI official website.

\*\*Nano SIM card and MicroSD card are not included in the package.

<sup>†</sup>VIGI Solar System Selector is available in the VIGI App or VIGI website. And it will be available in Q4 2024.

<sup>‡</sup>These product will be ready in Q3-Q4 2024.

<sup>§</sup>For Essential version only.

## TP-Link Systems Inc.

Homepage: [www.vigi.com](http://www.vigi.com)

TP-Link and VIGI are trademarks of TP-Link Systems Inc. or its affiliates. ©2024 TP-Link Systems Inc. All rights reserved.