

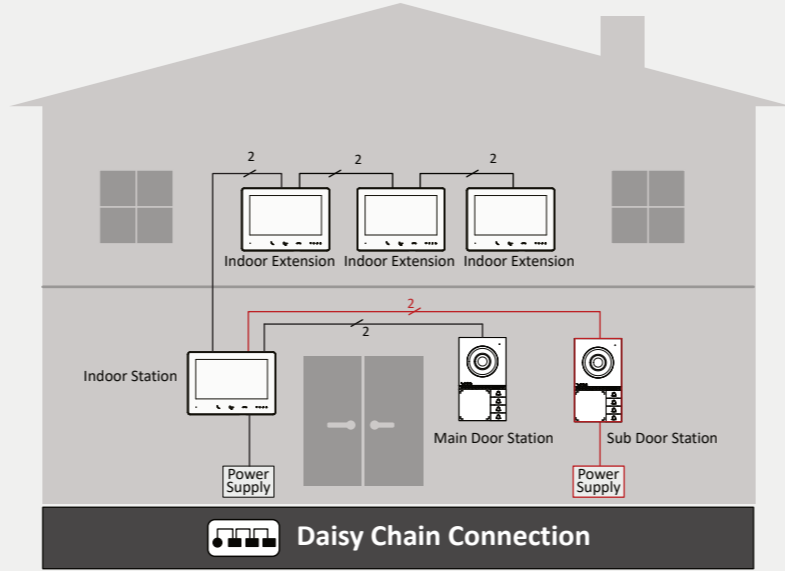


User Manual

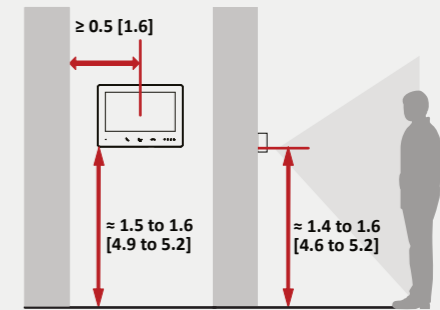
- 1 Typology and Installation Requirements
- 2 Room No. and Building No. Settings
- 3 4 Installation and Wiring
- 5 Configuration

1 Typology and Installation Requirements

- Typology**
- The indoor station's power supply should be 24V. The door station's power adapter is 12V. Please use the power adaptor provided in the package to power the device.
 - The name tag and call button are replaceable, you can replace them according to actual need. Here takes door station with 4 call buttons as an example.
 - The system supports maximum 2 door stations and 4 indoor stations. The built-in power supply supports 4 indoor stations and 1 door station. Additional door station requires separate power supply.
 - When there is only 1 door station, leave the sub door station which is marked red and connect the rest.



Installation Requirements Unit: m [feet]



Cable Type (Parallel/TP)	Indoor Station to Indoor Station(Max.)	Indoor Station to Door Station(Max.)
AWG24	4 m	60 m
AWG20	10 m	60 m
AWG16	20 m	120m

2 Room No. and Building No. Settings

Door Station

Press and hold the first button / call button for more than 5 s until the voice prompt "beep" is heard. Release to trigger AP activation or renewal.

By default, the AP mode would automatically closed after 30 min.

Rotary Switch

Reset Button: Hold for 5 s (1 beep) to reset the AP mode password.

DIP 1/2

MIC/SPK Audio Adjustment Switch

By default, DIP1/2 are set for door station with 1 call button.

- For door station with 2 call buttons, set DIP 1 as 1.
- For door station with 4 call buttons, set DIP 2 as 1.

For example:

Building No. (01 to 99): 01

Door Station Type: 00

Door Station Types:
Main Door Station: 00
Sub Door Station: 01 to 16

Door Open Duration

Rotary Switch	Open Duration(s)	Lock Type
0	2	DC Pulse (Lock 1)
1	5	DC Pulse (Lock 1)
2	10	DC Pulse (Lock 1)
3	2	Relay(Lock 2)
4	5	Relay(Lock 2)
5	10	Relay(Lock 2)
6	2	Lock 1+Lock 2
7	5	Lock 1+Lock 2
8	10	Lock 1+Lock 2
9		DC Pulse (Lock 1)+Mechanical Doorbell(Lock 2), duration set on the web.

Reserved

Indoor Station

It is recommended to remark the indoor station No. on the back of the device sticker to indicate the Indoor Station No.

For example:

Units: 02, 03

Indoor Station Type: 0

Indoor Station Types:
Main Indoor Station: 0
Indoor Extension: 1 to 3

Room No. (1 to 9): 2

Villa Mode

DIP1 DIP2

DIP 1 and DIP 2 are for mode settings.

The device is on debugging mode when the extension No. is 9.



About this Document

- This Document includes instructions for using and managing the Product. Pictures, charts, images and all other information hereinafter are for description and explanation only.
- The information contained in the Document is subject to change, without notice, due to firmware updates or other reasons. Please find the latest version of the Document at the Hikvision website (<https://www.hikvision.com>). Unless otherwise agreed, Hangzhou Hikvision Digital Technology Co., Ltd. or its affiliates (hereinafter referred to as "Hikvision") makes no warranties, express or implied.
- Please use the Document with the guidance and assistance of professionals trained in supporting the Product.

About this Product

This product can only enjoy the after-sales service support in the country or region where the purchase is made.

Acknowledgment of Intellectual Property Rights

- Hikvision owns the copyrights and/or patents related to the technology embodied in the Products described in this Document, which may include licenses obtained from third parties.
- Any part of the Document, including text, pictures, graphics, etc., belongs to Hikvision. No part of this Document may be excerpted, copied, translated, or modified in whole or in part by any means without written permission.
- HIKVISION and other Hikvision's trademarks and logos are the properties of Hikvision in various jurisdictions.
- Other trademarks and logos mentioned are the properties of their respective owners.

LEGAL DISCLAIMER

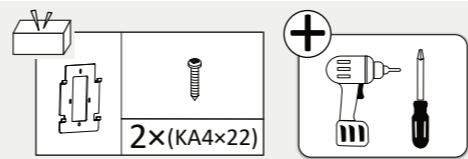
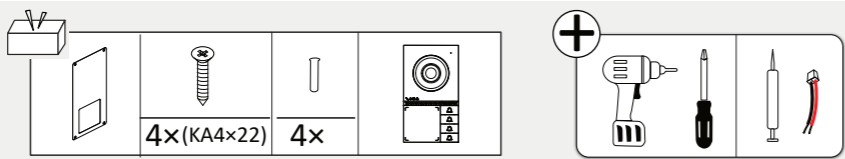
TO THE MAXIMUM EXTENT PERMITTED BY APPLICABLE LAW, THIS DOCUMENT AND THE PRODUCT DESCRIBED, WITH ITS HARDWARE, SOFTWARE AND FIRMWARE, ARE PROVIDED "AS IS" AND "WITH ALL FAULTS AND ERRORS". HIKVISION MAKES NO WARRANTIES, EXPRESS OR IMPLIED, INCLUDING WITHOUT LIMITATION, MERCHANTABILITY, SATISFACTORY QUALITY, OR FITNESS FOR A PARTICULAR PURPOSE. THE USE OF THE PRODUCT BY YOU IS AT YOUR OWN RISK. IN NO EVENT WILL HIKVISION BE LIABLE TO YOU FOR ANY SPECIAL, CONSEQUENTIAL, INCIDENTAL, OR INDIRECT DAMAGES, INCLUDING, AMONG OTHERS, DAMAGES FOR LOSS OF BUSINESS PROFITS, BUSINESS INTERRUPTION, OR LOSS OF DATA, CORRUPTION OF SYSTEMS, OR LOSS OF DOCUMENTATION, WHETHER BASED ON BREACH OF CONTRACT, TORT (INCLUDING NEGLIGENCE), PRODUCT LIABILITY, OR OTHERWISE, IN CONNECTION WITH THE USE OF THE PRODUCT, EVEN IF HIKVISION HAS BEEN ADVISED OF THE POSSIBILITY OF SUCH DAMAGES OR LOSS.

YOU ACKNOWLEDGE THAT THE NATURE OF THE INTERNET PROVIDES FOR INHERENT SECURITY RISKS, AND HIKVISION SHALL NOT TAKE ANY RESPONSIBILITIES FOR ABNORMAL OPERATION, PRIVACY LEAKAGE OR OTHER DAMAGES RESULTING FROM CYBER-ATTACK, HACKER ATTACK, VIRUS INFECTION, OR OTHER INTERNET SECURITY RISKS; HOWEVER, HIKVISION WILL PROVIDE TIMELY TECHNICAL SUPPORT IF REQUIRED.

YOU AGREE TO USE THIS PRODUCT IN COMPLIANCE WITH ALL APPLICABLE LAWS, AND YOU ARE SOLELY RESPONSIBLE FOR ENSURING THAT YOUR USE CONFORMS TO THE APPLICABLE LAW. ESPECIALLY, YOU ARE RESPONSIBLE FOR USING THIS PRODUCT IN A MANNER THAT DOES NOT INFRINGE ON THE RIGHTS OF THIRD PARTIES, INCLUDING WITHOUT LIMITATION, RIGHTS OF PUBLICITY, INTELLECTUAL PROPERTY RIGHTS, OR DATA PROTECTION AND OTHER PRIVACY RIGHTS. YOU SHALL NOT USE THIS PRODUCT FOR ANY PROHIBITED END-USES, INCLUDING THE DEVELOPMENT OR PRODUCTION OF WEAPONS OF MASS DESTRUCTION, THE DEVELOPMENT OR PRODUCTION OF CHEMICAL OR BIOLOGICAL WEAPONS, ANY ACTIVITIES IN THE CONTEXT RELATED TO ANY NUCLEAR EXPLOSIVE OR UNSAFE NUCLEAR FUEL-CYCLE, OR IN SUPPORT OF HUMAN RIGHTS ABUSES.

IN THE EVENT OF ANY CONFLICTS BETWEEN THIS DOCUMENT AND THE APPLICABLE LAW, THE LATTER PREVAILS.

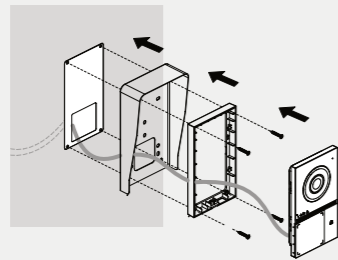
3 Installation



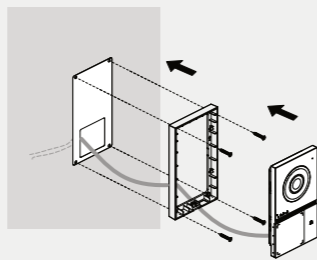
Door Station Installation

i The name tag and call button are replaceable, you can replace them according to actual need. Here takes door station with one call button as an example.

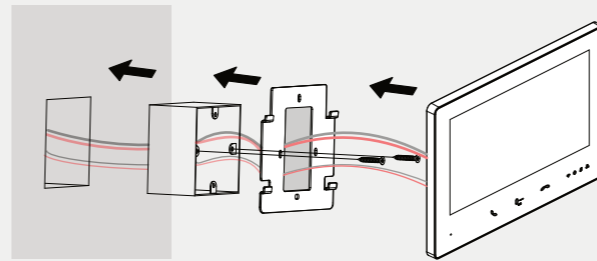
Surface Mounting with Rain Shield



Surface Mounting without Rain Shield



Indoor Station Installation

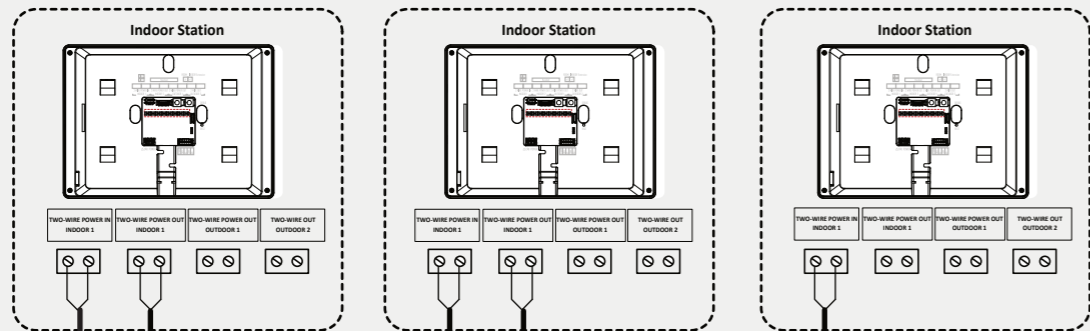
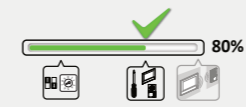


4 Wiring

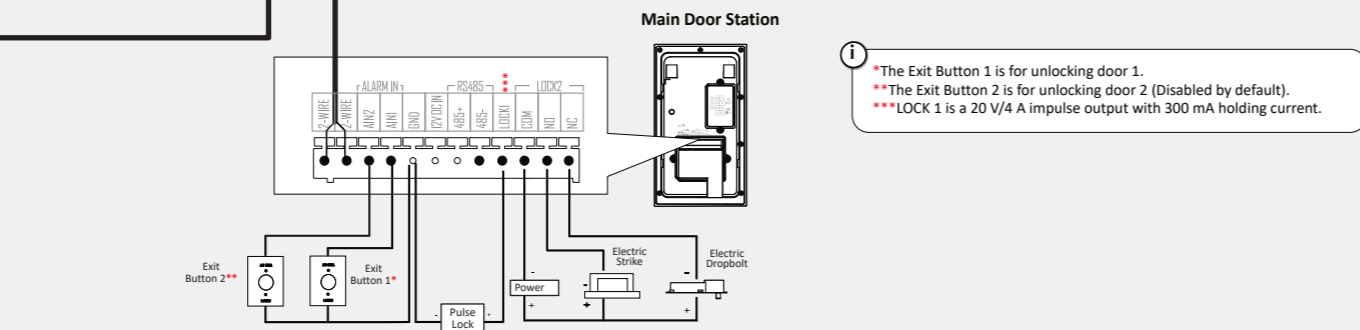
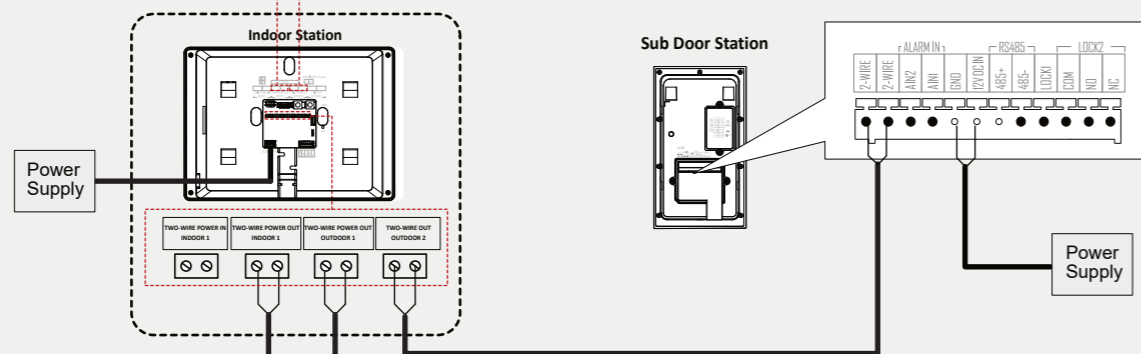


! Make sure no wires are bare when connecting.

i The 2-wire cable between 2 devices should be undivided. Using discontinuous cables for connecting will cause impact on the power supply and communication.



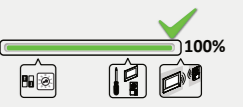
i The 2 Wire power out terminals for indoor 2 support 24V, 0.25A.
The 2 Wire power out terminals for outdoor 1 support 24V, 0.75A.



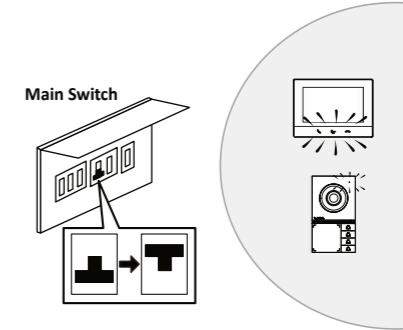
i *The Exit Button 1 is for unlocking door 1.
**The Exit Button 2 is for unlocking door 2 (Disabled by default).
***LOCK 1 is a 20 V/4 A impulse output with 300 mA holding current.



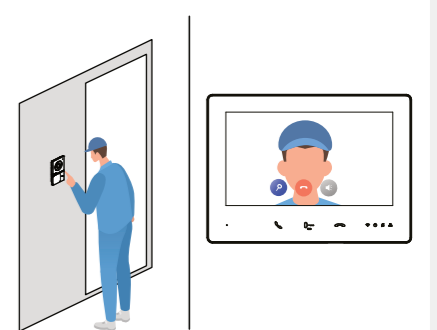
5 Configuration



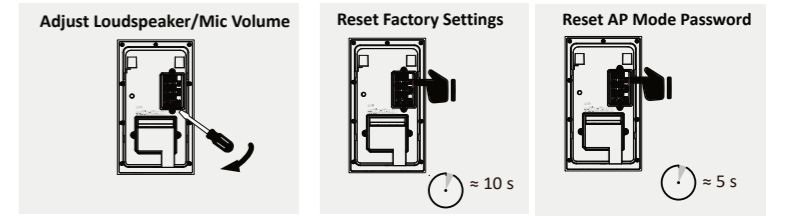
5.1 Configuration Power On



5.2 Configuration Connection Test



5.3 Configuration Door Station Additional Configuration



5.4 Configuration How to Add Password/Card Door Station Additional Configuration

For door station with physical keyboard

1. Use your mobile phone or computer to connect to the AP hotspot of the door station. If you can't find the AP, press and hold the first button / call button for more than 5 seconds until the voice prompt "beep" is heard, which means the AP mode has been enabled.

i By default, the AP mode would automatically closed after 30 min.

2. Open the browser, input the default IP and log onto the web.
3. Click *Person Management* > *+Add* to enter the Add Person page. Click *Add Card*, enter the Card No. and select the Property, and click OK to add the card. Click *Save* to save the settings.
4. Click *Configuration* > *Access Control* > *Password Settings*. Click *Add* to add public password.
 - 1) Select Password Type.
 - 2) Enter the password and confirm the password. Optional: Add remarks for the password.
 - 3) Select Electric Lock. Click *Save* to save the settings.

For other models

The configuration procedures are the same as above but password is not supported.