

Panoramic Series

Huge Panoramas, in One Shot



HIKVISION

Unlock Wide-Angle Perspectives with a Single Camera

- Minimize installation and labor costs with multiple cameras in a single unit
- Enhance easy operation and maintenance with only one cable, one IP address, and one license

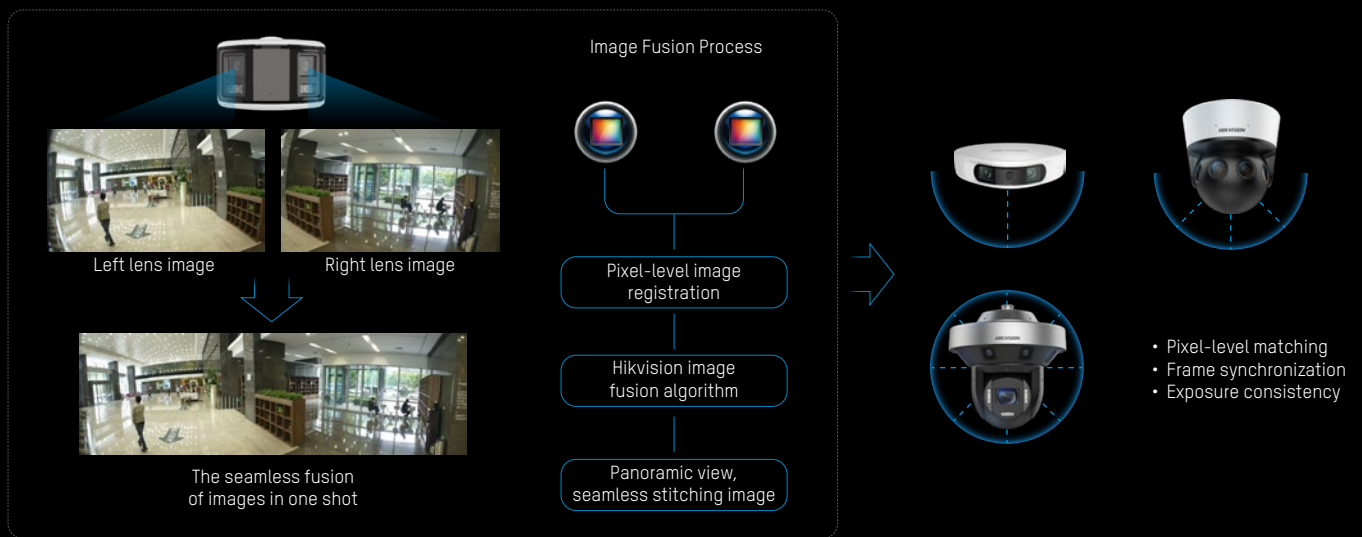


=



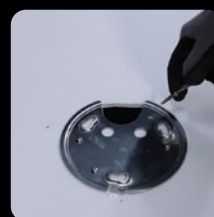
Pioneering Image Fusion Technology for Seamless Stitching

- Achieve seamless large vertical field of view (FOV) coverage by using vertical stitching
- Enable manual distortion control to balance wide FOV and image fidelity



Ease of Use, Upgrade to the Next Level

- On-step installation with motorized PT, PTZ, and PTRZ lenses
- No need for installation alignment with quick installation design and flexible angle adjustment



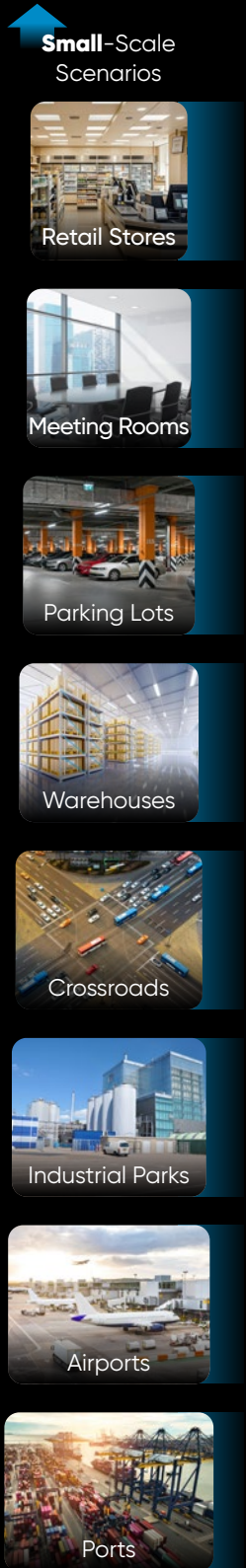
Step 1



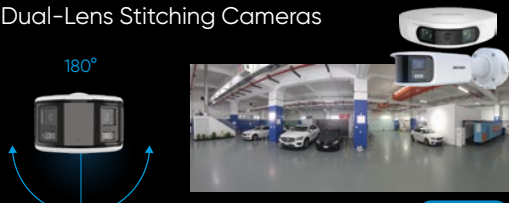
Step 2

Diverse Products Portfolios Tailored for Diverse Scenarios

FOV up to 360°, with both stitched and multi-directional models to choose from, suitable for small- to large-scale scenarios





Small-Scale
Scenarios

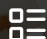
<p>Fisheye Cameras</p>  <p>360° 12 MP</p>	<p>Mini PanoVu PTZ</p>  <p>360° 3 × 2 MP + 4 MP</p>	<p>Dual-Directional Cameras</p>  <p>180° 2 × 8 MP</p>
<p>Dual-Lens Stitching Cameras</p>  <p>180° 8 MP / 16 MP Stitching</p>	<p>Portable Panoramic Cameras</p>  <p>180° 16 MP Stitching</p>	
<p>180° Stitched PanoVu Camera</p>  <p>180° 32 MP Stitching</p>	<p>SphereVision Cameras</p>  <p>360°+360° 32 MP Stitching</p>	
<p>6D Multidirectional Cameras</p>  <p>360° 4 × 5 MP + 2 MP</p>	<p>Omnidirectional Cameras</p>  <p>2 × 4 MP + 2 × 8 MP</p>	<p>Medium-Mounted PanoVu PTZ Cameras</p>  <p>360° 8 × 4 MP + 4 MP Stitching</p>
<p>High-Mounted PanoVu PTZ Cameras</p>  <p>360° 8 × 8 MP + 8 MP Stitching</p>	<p>Multidirectional Panoramic & PTZ Cameras</p>  <p>360° 4 × 8 MP + 8 MP</p>	

Large-Scale
Scenarios

Fisheye Cameras

 Real 12 MP Resolution

 "4 + 1" AI Functions

 20 Dewarping Modes

 IP67  IK10

360°



3 × IR Lights
Independent brightness control
Avoid light reflection on walls

4 × Mic + 1 × Speaker
Better audio performance
Two-way audio

Quick Installation Design
One-step installation

More Effective Pixels for Better Details Display

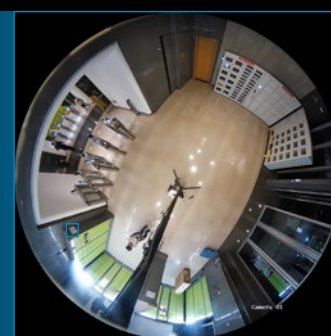
Conventional 12 MP Fisheye Camera



Ineffective pixels

4:3 ratio
Effective pixels = 9 MP

Hikvision 12 MP Fisheye Camera



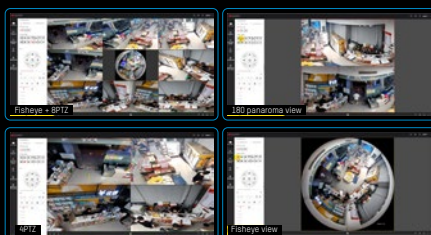
effective pixels
+36%

1:1 ratio
Effective pixels = 12.27 MP



Flexible Dewarping Modes

20 Modes
(camera-side/
software
dewarping)



Cutting-Line Adjustment

One-click to cover the key area
No need for installation alignment



"4+1" Intelligent Functions



Color Schemes: High (11 min 50s) Low (0 s)

Heat Map

Analyze flow trends and identify the most attractive areas



• 8% A Out 19 Humans
• 8% B Out 23 Humans
• 8% C Out 31 Humans
• 8% D Out 26 Humans

Intersection Analysis

Detect and analyze flow in an intersection-like scene, and generate reports



People Counting

Count people entering, exiting and passing by separately



Queue Management

Real-time queue monitoring and in-time optimization

4 Switchable AI Functions + HEOP Supports third-party applications

Application Scenarios

Ceiling Mount
360° FOV

Wall Mount
180° FOV

Installation Height
2.5 to 4.5 m



Stores



Cafés



Schools



Lobbies



Meeting Rooms



Warehouses

Product Showcase



HOT

DS-2CD63C5G1-IVS
DS-2CD6365G1-IVS

- 360° FOV, up to 12 MP @ 30 fps, 1:1 ratio (3504 × 3504)
- 20 dewarping modes
- Two-way audio, 4 built-in microphones, 1 built-in speaker
- "4+1" intelligent functions
- IP67, IK10, EN 50121-4

360°

6/12 MP

HEOP

IP67, IK10

IMMERSION



NEW

DS-2CD63C5G1-S/RC
DS-2CD6365G1-S/RC

- 360° FOV, up to 12 MP @ 30 fps, 1:1 ratio (3504 × 3504)
- 20 dewarping modes
- Supports embedded ceiling mount
- 4 built-in microphones
- "4+1" intelligent functions

360°

6/12 MP

HEOP

Indoor

IMMERSION



360°

9 MP

HEOP

IP67, IK10

DS-2CD6395G1E-IV

- 360° FOV, 9 MP @ 30 fps (3024 × 3024)
- 20 dewarping modes
- "1+1" intelligent functions
- 2 built-in microphones, 1 built-in speaker
- Built-in TPM module
- IP67, IK10, EN 50121-4



360°

5 MP

HEOP

Indoor

DS-2CD3956G2-IS(U)

- 360° FOV, 5 MP @ 30 fps (2560 × 1920)
- "1+1" intelligent functions
- -U: 1 built-in microphone



360°

6 MP

IP67, IK10

Lens Cover

DS-2CD6W65G1-IVS

- 360° FOV, 6 MP @ 30 fps (2560 × 2560)
- Anti-ligature corner-mount
- Motorized lens cover for privacy protection
- 1 built-in microphone
- IP67, IK10

180° Stitched PanoVu Cameras

- Seamless Stitching
- Up to 32 MP Resolution
- AcuSense and People Density
- IP67
- IK10



Seamless Stitching Image with Ultra High Resolution

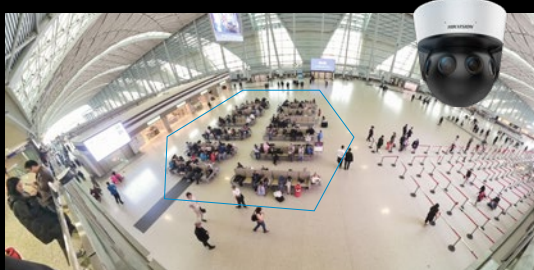
Stitching Distortion Adjustment

Intelligent Functions Overview



AcuSense

Enhance perimeter protection by effectively reducing blind spots



People Density

Provide decision support for urban planning, traffic management, event organization, etc.



AR Interactive

Enhance situational awareness in large scenarios and improve operation efficiency

Application Scenarios



Halls



Stadiums



Plants



Squares

Product Showcase



180°

16 MP



DS-2CD6982G0-U

- 16 MP@30 fps
- FOV: horizontal 180°, vertical 53°
- 180° stitched panoramic images
- -U: 2 built-in microphones
- Built-in 120 GB eMMC for local storage
- •IP65, PoE



180°

16 MP



DS-2CD6982G0-WU/4G

- 16 MP@30 fps
- FOV: horizontal 180°, vertical 53°
- 180° stitched panoramic images
- -U: 2 built-in microphones
- Built-in 120 GB eMMC for local storage
- -W/4G: wireless (Wi-Fi, Bluetooth, 4G) and battery-powered model
- IP65



180°

32 MP



DS-2CD6984G1-IHSUY(/NFC)
DS-2CD6944G1-IHSUY


- Up to 16 MP@60 fps, 32 MP@30 fps
- FOV: horizontal 185°, vertical 100°
- 180° stitched panoramic image
- -U: 2 built-in microphones
- F1.0 large aperture, supports AcuSense, People Density, AR function with HCP
- IP67, IK10, -Y: supports NEMA 4X

SphereVision Cameras

360° + 360°



 360° Coverage with NO Blind Spots

 32 MP Ultra High Resolution

 Flexible Vision Modes

 Compact Design

 IP67

4 × Fisheye Lenses

Flexible Vision Modes



360° Panorama



Panorama



Top Panorama

Application Scenarios



Stations



Galleries



Parks

Product Showcase



360° + 360°

32 MP

DS-2CD6984G1/VR-U/NFC

- 4 × fisheye cameras, 32 MP ultra-high resolution
- 3 flexible preview / playback modes
- 4 fisheye cameras stitching together for a 360° spherical vision (Horizontal 360° + Vertical 360°)
- IP67



Dual-Directional Cameras

180°



2 Lens in One Unit, 1 IP Only

Bi-Directional Monitoring

Compact Design

IP67 IK10

Dual-Lens for Bi-Directional Monitoring



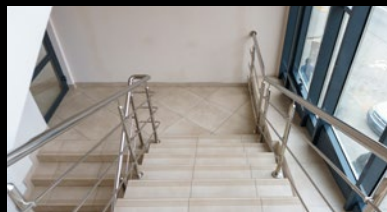
Corridor Side A

Corridor Side B

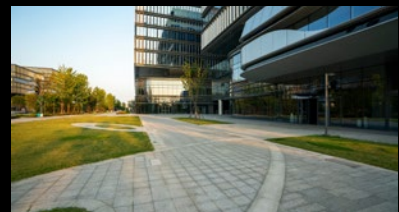
Application Scenarios



Corridors



Stairs



Roadsides

...

Product Showcase



180°

2 × 8 MP AcuSense

Manual PTR

DS-2CD6D82G2-IS
DS-2CD6D42G2-IS

- 2 × 4 MP @ 30 fps / 8 MP @ 20 fps
- 2.8 / 4 mm lens with manual PTR
- Each channel supports AcuSense
- Built-in microphone
- IP67, IK10



180°


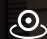
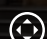
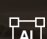
2 × 4 MP AcuSense

Manual PT

DS-2CD3343G2/X2-LIZSU/SL

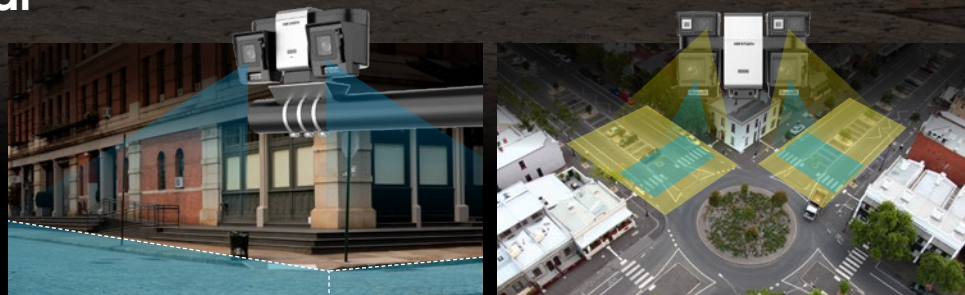
- 2 × 2.8 / 4 mm lens with manual PT
- 2 × 4 MP @ 30 fps
- 120 dB WDR
- 40 m smart hybrid light
- Each channel supports AcuSense
- Audio I/O, built-in microphone and speaker, Live Guard
- IP67

Omnidirectional Cameras

-  2/4 Lens in One Unit, 1 IP only
-  Omnidirectional Monitoring
-  Flexible Lens Pan Tilt Adjustment
-  Various Built-in AI



Omnidirectional Monitoring



Application Scenarios



Intersections



Roadsides



City Roads



Stations

Product Showcase



2 × 4/8 MP

Motor PT

DeepinView
DarkFighter 2+

iDS-2CD8Vxx6G0/X2-XZHS(Y)

- 2 × 10-50 mm VF lenses with motor PT
- 2 × 1/1.8" sensors
- 2 × 4/8 MP @ 30 fps
- 150 dB WDR, Smart Hybrid Light
- 5-in-1 intelligence
- TPM 2.0
- IP67, PVC FREE, NEMA 4X anti-corrosion for -Y models



4 × 4/8 MP

Motor PT

DeepinView
DarkFighter 2+

iDS-2CD8Vxx6G0/X4-XZHS(Y)

- 2 × 10-50 mm VF lenses + 2 × 4 mm F1.0 fixed lenses, all with motor PT
- iDS-2CD8V886G0/X4: 2 × 1/1.2" sensor + 2 × 1/1.8" sensor; iDS-2CD8V446G0/X4: 4 × 1/1.8" sensor
- 140 dB WDR, Smart Hybrid Light
- 5-in-1 intelligence
- TPM 2.0
- IP67, PVC FREE, NEMA 4X anti-corrosion for -Y models



2 × 4 MP



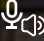

Manual PT

DeepinView
DarkFighter

iDS-2CD8V447G0E/X2-XZS

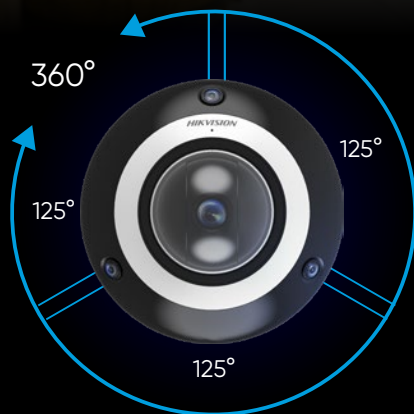
- 2 × 4-6 mm or 6-9 mm VF lenses with manual PT, pan -10° to 190°, tilt 0° to 90°, rotate: 0° to 350°
- 2 × 1/1.8" sensors
- 2 × 4 MP @ 25/24 fps (50/60 Hz)
- 120 dB WDR
- 30 m Smart Hybrid Light
- 8-in-1 built-in intelligence
- TPM 2.0
- IP67, PVC FREE

Mini PanoVu PTZ Cameras

-  4 Lens in One Unit, 1 IP Only
-  Quad-directional Monitoring
-  Built-in Mic and Speaker
-  20 m IR



360° Coverage with 4 x PTZ for Details



Application Scenarios



Retail Shops



Commercial Buildings



Shopping Malls ...

Product Showcase



360°


3 × 2 MP + 4 MP


DS-2DP3D404IWG1-E/36

- Panoramic: 3 × 2 MP @ 30 fps, 2 mm fixed lens
- PTZ: 4 MP @ 30 fps, 4 × 2.8 – 12 mm varifocal lens
- Built-in microphone and speaker for real-time audio security and two-way audio
- 20 m IR

6D Multidirectional Cameras

 "4+1" Lenses Cover Multi-directions

 PTRZ Lens for Adjustment

 4-Channel AcuSense

 IP67

 IK10

 NEMA 4X

360°



NEMA 4X
Enclosure

4 × Varifocal Lenses
with PTRZ

Fixed Lens

"4+1" Lenses for Multidirectional Coverage

360° coverage

Cover the area beneath the camera

1 Fixed-Lens
For Areas Beneath the Camera

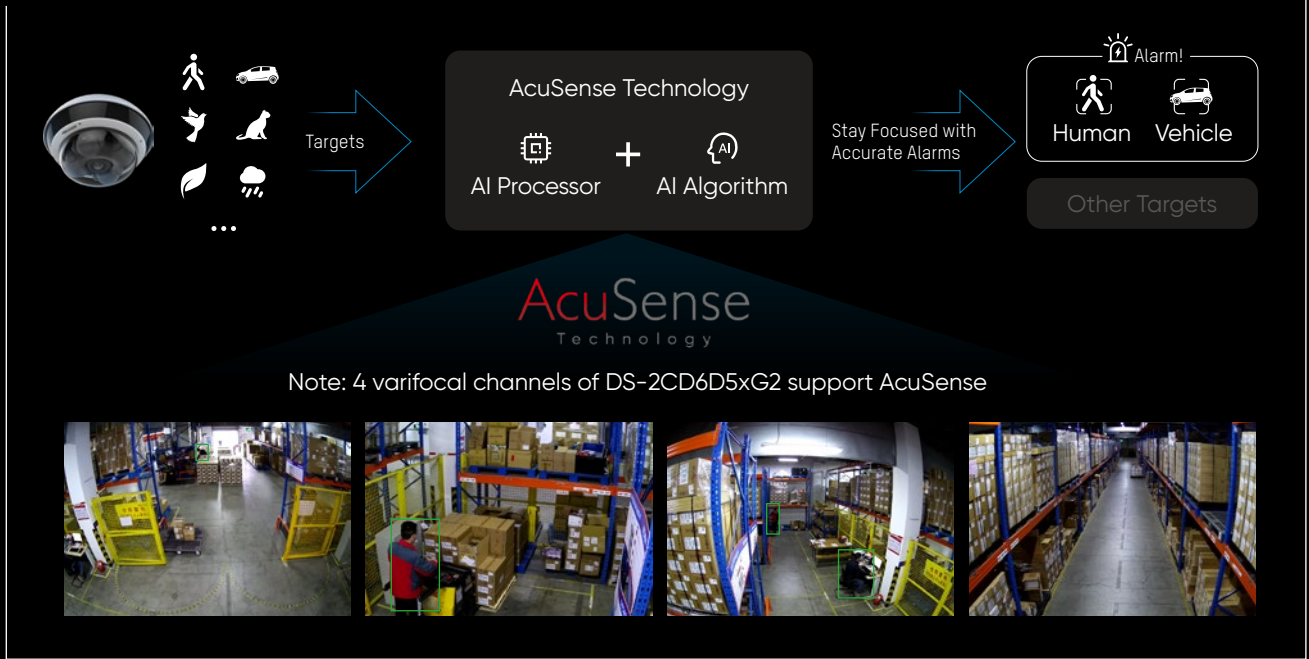
4 Varifocal Lenses
For Horizontal 360° Coverage

AI IR Supplemental Lights & PTRZ Lenses

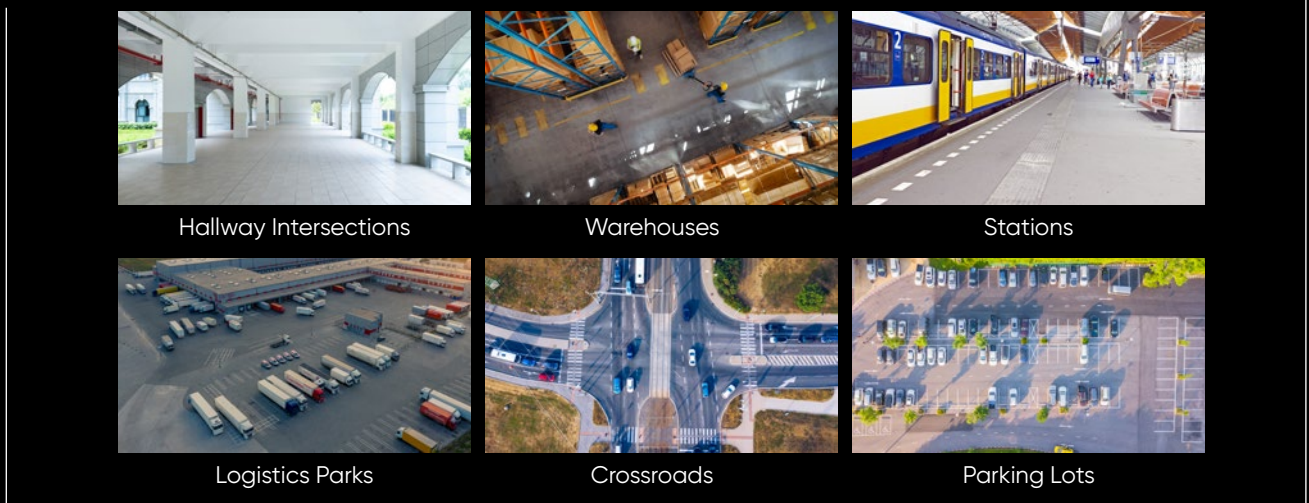
Automatically synchronizes lighting with lens movement to ensure consistent illumination and enhanced image clarity

Motorized PTRZ design enables remote pan / tilt / rotate / zoom adjustments with precision control

Intelligent Functions Overview



Application Scenarios



Product Showcase



360°
4 × 4 MP

DS-2CD6D44G1(H)-IZS

- 4×4 MP @ 30 fps
- Focal length: 2.8-8 mm / 2.8-12 mm
- Manual PTRZ adjustment
- IP67, IK10, EN 50121-4



360°
4 × 5 MP
AcuSense

DS-2CD6D54G2-IZHS

- 4×5 MP @ 30 fps
- Focal length: 2.8-8 mm
- Supports motorized PTRZ
- 4 channels support AcuSense
- IP67, IK10, NEMA 4X anti-corrosion, EN 50121-4



360°
4 × 5 MP + 2 MP
HOT AcuSense

DS-2CD6D55G2-IZHS

- 4×5 MP @ 30 fps + 2 MP @ 30 fps
- Focal length: 2.8-8 mm
- Supports motorized PTRZ
- 4 channels support AcuSense
- IP67, IK10, NEMA 4X anti-corrosion, EN 50121-4

Stitching Panorama & PTZ Cameras

- ⊗ Blind-Spot-Free Panorama
- 📷 Up to 32 MP Resolution
- 45x+ Up to 45x Optical Zoom PTZ
- 📶 Perimeter Protection and People Density

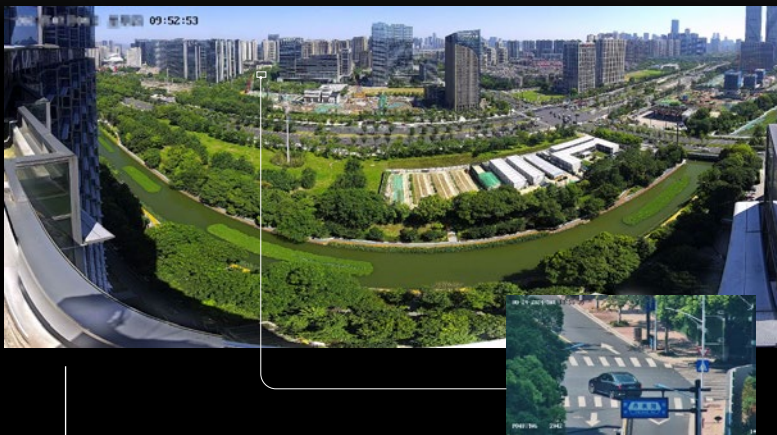


High-Mounted
Installation Height: ≥ 15 m



Medium-Mounted
Installation Height: 6 – 15 m

Seamless Stitching Panoramas + PTZ Details for Large-Scale Scenarios



True 360° Coverage

110° vertical FOV
No Blind Spots in the Panoramas
* Installation height ≥ 2.5 m

PTZ for flexible tracking of remote details

- Up to 45x optical zoom
- Built-in gyroscope to improve EIS performance

AR Live Interaction with HikCentral Professional



Video Live Interactive Map

- Redefine & upgrade onsite video security applications
- Enhance situation awareness in large scenarios
- Facilitate the construction of a global overview or that of key areas for visualized process management

AR Monitoring Mode

- Allow users to Tag Group defined based on management requirements
- Link all separated camera points together

Intelligent Functions Overview



People Density



Congestion Alarm



Smart Linkage



Perimeter Protection

Application Scenarios



Public Security



Traffic Management



Water conservancy



Airports and Stations



Factories



Schools

Product Showcase



360°

8 × 8 MP + 8 MP



DS-2DP8A845IXG1-LF/864(F0)
DS-2DP8A440IXG1-LEF/832(F0)
DS-2DP8A440IXG1-LEF/416(F0)

- Panoramic: 16-64 MP @ 30 fps, 180°-360° FOV
- PTZ: 4 MP 40x optical zoom, 8 MP 45x optical zoom
- 500 m IR supplement light
- Support AR function based on professional platform
- IP67, IK10



360°

8 × 4 MP + 4 MP



DS-2DP7A425MXG1-LEF/416
DS-2DP7A432MXG1-LEF/624
DS-2DP7A432MXG1-LEF/832

- Panoramic: 16-32 MP @ 30 fps, 180°-360° FOV
- PTZ: 4 MP 25/32x optical zoom
- 50 m white light and 250 m IR hybrid light
- Support AR function based on professional platform
- IP66

Multidirectional Panoramic & PTZ Cameras

360°



"4+1" Lenses Cover Multi-Directions

PTR Lens for Adjustment

Up to 36x Optical Zoom PTZ

IP67

IK10

NEMA 4X

"4+1" Lenses for Multidirectional Big Picture and Details



1 PTZ Lens

For flexible monitoring of long range with up to 36x optical zoom

4 fixed focal lenses with motorized pan, tilt and rotate for horizontal 360° coverage



AcuSense
Technology



AI Processor



AI Algorithm



Smart Linkage

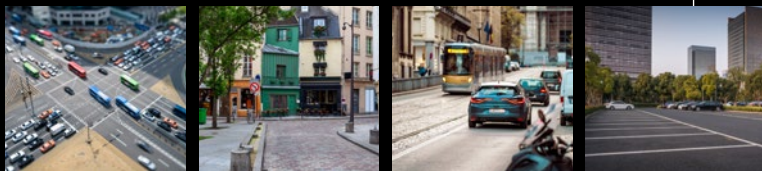
Auto tracking of persons and vehicles based on perimeter protection



AR Live

3D Site Management with HikCentral Professional

Application Scenarios



Intersections

Roadsides

City Roads

Parking Lots

...

Product Showcase

DS-2DP7D425IXG1-LEF(Y)/416
DS-2DP7D836IXG1-LEF(Y)/432(IR)



- Panoramic: 4x4 MP @ 30 fps, 4x8 MP @ 30 fps, up to 360° FOV
- PTZ: 4/8 MP 25x/36x optical zoom
- (IR) model: 20 m IR for panoramic lenses
- 300 m IR supplement light for PTZ lens
- Supports motorized PTR
- Support perimeter protection and multi intelligences in PTZ channel
- IP67, -Y: NEMA 4X anti-corrosion

360°

4 x 8 MP + 8 MP

DarkFighter 2.5
ColorVu



www.hikvision.com
support@hikvision.com



HIKVISION®