

UHF RFID Standalone Terminal



U1000 Pro

The U1000 Pro is a remote RFID access control machine based on the U1000 upgrade, which integrates a high-performance reader and C3 Pro controller. LED interactive experience in different scenarios, and easy to operate. Supports ZK Bio CV Access and ZKBio CV Security, can debug parameters on the reader web, and has passed IP67 CE and FCC certifications.

Features



Long Reading
Distance



IP66 Protect Level



Supports ZKBio CV Access &
ZKBioCV Security software



Access Control
Function

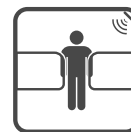
Applications



Long distance fixed
vehicle management



Long distance access
control management



Long distance pedestrian
access management

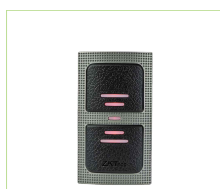
Specifications

Model	U1000E Pro	U1000F Pro
Card Capacity	5000 cards	
Log Capacity	30,000 Transactions	
Hardware Platform	ZMM220	
Working Frequency	865MHz-868MHz	902MHz-926MHz
Reading Distance	0 - 9m (Stable is 0 - 5m)	
Communication	TCP/IP	
Access Control Interface	Wiegand In/Out, RS485, 3rd Party Electric Lock, Door Sensor, Exit Button, Alarm	
Access Control Functions	Standard Access Functions, Anti-passback	
Antenna Gain	9dBi	
Output Power	10dBm-30dBm	
Maximum Power Consumption	<2W	
Protection Level	IP67	
Support Software	ZK BioAccess, ZKBio CVSecurity3.0	
Working Voltage	DC 9V - 12V	
Working Current	150mA (Always Reading)	
Working Temperature	-20°C ~ +60°C	
Working Humidity	<95% (25°C)	
Dimension	309mm (±1.5) *309mm (±1.5) *69.5mm (±1.0)	

Accessory Products



PB Series Automatic Barrier



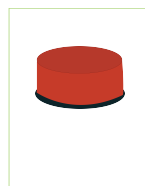
Wiegand Reader



Exit Button

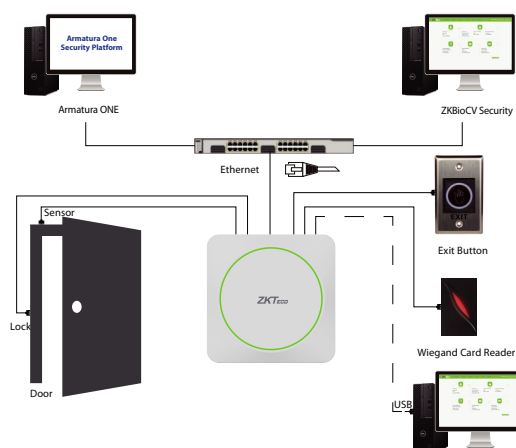


Electric Lock



Alarm

Configuration



ZKTECO CO.,LTD.
www.zkteco.com
 E-mail: sales@zkteco.com

© Copyright 2025. ZKTECO CO.,LTD. ZKTECO Logo is a registered trademark of ZKTeco or a related company. All other product and company names mentioned are used for identification purposes only and may be the trademarks of their respective owners. All specifications are subject to change without notice. All rights reserved.

